

To Use at Participating Pharmacies

- Take your card to a participating pharmacy. The card can be used for all medications; however, not all may be eligible for a discount. You'll always receive the lower cost available to you through either the pharmacy or WellCardRx.
- One card automatically covers all family members at no cost.
- You can use the card for prescriptions not covered by your insurance or excluded from Medicare Part D.

OUTLOOK Vision Discount Benefit

To find a provider, go to www.OutlookVision.com or call 800-342-7188. Present your card at a participating provider to receive your discount. Hearing benefits from Beltone are also available through OUTLOOK.

DENTEMAX Dental Discount Benefit

To find a provider, go to www.DenteMax.com. Present your card at a participating provider to receive your discount.

Lab & Imaging Discount Benefit

Save 50% or more on Lab & Imaging tests. Go to www.MyMedLab.com or call 888-696-3352 for labs. Go to www.PrePaidImaging.com or call 800-903-3921 for imaging.

This is Not Insurance. Non-prescription, medical equipment, and over-the-counter products are not included in this program. The prescription discount card program is not an insurance plan or entity that covers prescription drug costs or arranges for prescription services. Prescriptions may be filled at any pharmacy; however, the prescription discount card program provides a discount only at a participating pharmacy.



www.OutlookVision.com



www.DenteMax.com



www.MyMedLab.com

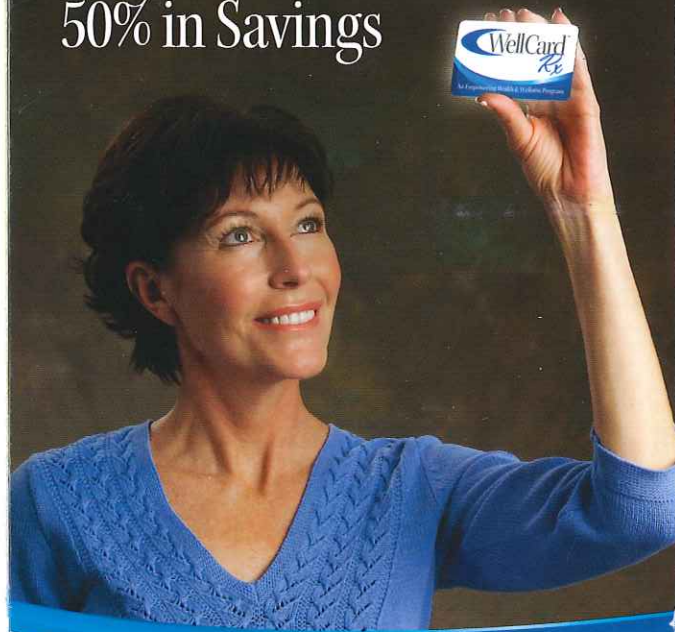
Present this card and your prescription to any participating pharmacy to receive your discount. At the time of purchase, you are responsible for paying the entire cost of the drug, once discount is applied.

FIND A PROVIDER: call 800-562-9625 or visit www.WellCardRx.com

PHARMACIST HELP DESK: 888-886-5822

*This is Not Insurance. It is a Prescription Discount program.
This card is not a guarantee of benefits.
THIS PROGRAM IS VOID WHERE PROHIBITED BY LAW.*

Use This Card to Access Health Care with Up to 50% in Savings



It's easy to start saving today...

1. Find your local pharmacy or provider by calling 800-562-9625, or go to www.WellCardRx.com and click on Locate A Provider.
2. Keep this card in your wallet and present it at your local pharmacy to save.

PRESENT THIS CARD TO ANY PARTICIPATING PHARMACY OR PROVIDER
Locate a provider: call 800-562-9625 or visit www.WellCardRx.com. This is Not Insurance.

NICA

Your Resource For Independent Contractor Issues

Group ID: NICARX

Member ID: Enter member's 10-digit phone #, then add 2-digit person code. 01=Member 02=Spouse 03=Dependent, etc.

Example: xxxxxxxxxx, enter as xxxxxxxxxx01

Processor: NetCard Systems

Bin #: 008878

WellCard[™]
Rx

An Empowering Health & Wellness Program